

ERKADO

doors are our world

Marketing
materials





INTRODUCTION

Take a look at our new catalog of marketing materials. It's a great tool to support sales.

In the catalog you will find not only advertising materials, but also samples of our products that stand out on the market and display systems tailored for ERKADO products.

We recommend them to every professional showroom.

TABLE OF CONTENTS

CATALOGS.....	3
STANDS.....	6
MODELS.....	7
SHOWROOM ACCESSORIES	17
OFFICE ACCESSORIES	33
CLOTHING & EQUIPMENT	36
ADVERTISING & OUTDOOR	39



CATALOGS

ERKADO product catalogs contain the latest designs, colors and proposed solutions.

Different language versions of the catalog are available for download in PDF format from our website: www.erkado.pl in the "Download" tab.

CATALOG OF INTERIOR DOORS

Available language versions:

- polish
- english
- bulgarian
- czech
- german
- french
- hungarian
- romanian
- ukrainian
- lithuanian
- slovak
- croatian
- latvian
- slovene
- macedonian



DOWNLOAD



MATERIAL FREE OF CHARGE

CATALOGS

CATALOG OF STEEL DOORS

Available language versions:

- polish
- english
- bulgarian
- czech
- german
- french
- hungarian
- romanian
- ukrainian
- lithuanian
- slovak
- croatian
- latvian
- slovene



DOWNLOAD



MATERIAL FREE OF CHARGE

CATALOGS

CATALOG OF WOODEN DOORS

Available language versions:

- polish
- english
- bulgarian
- czech
- german
- french
- hungarian
- romanian
- ukrainian
- lithuanian
- slovak
- croatian
- latvian
- slovene



DOWNLOAD



MATERIAL FREE OF CHARGE

BROCHURE STANDS

CATALOG DISPLAY STAND

Stand for one-sided presentation of advertising materials (catalogs, leaflets) in A4 and A3 format.
All made of steel, powder coated in matte black.

SPECIFICATIONS:

- dimensions: base 34.3 cm x 37.5 cm
height 175 cm

750.00 PLN NET

approx. **176.50 €** NET *)



SAMPLES – INTERIOR DOORS

LAMINATE SAMPLES OF INTERIOR DOORS – LARGE

- interior door pattern book
- thick and solid binding in a binder form
- aesthetic case



SPECIFICATIONS:

- 28 x 31 x 7.5 cm - dimensions of the packed binder
- 20.9 x 29.5 cm - dimensions of insert

150.00 PLN NET

approx. **35.30 €** NET*)

SAMPLES – INTERIOR DOORS

LAMINATE SAMPLES OF INTERIOR DOORS – SMALL

A fan-style sample book with double-sided laminate samples used in doors.

NOTE!

For selected laminates, it is recommended to check the pattern on a larger sample format.



Possibility to order individual inserts

MATERIAL FREE OF CHARGE

INTARSIA SAMPLES

- dimensions: 20 x 5 cm



MATERIAL FREE OF CHARGE

SAMPLES – EXTERIOR DOORS

LAMINATE SAMPLES OF STEEL DOORS – LARGE

- exterior steel door laminate samples
- thick and sturdy in the form of a binder



Possibility to order individual inserts

SPECIFICATIONS:

- dimensions: 28 x 31 x 7.5 cm

350.00 PLN NET

approx. **82.40 €** NET *)

LAMINATE SAMPLES OF STEEL DOORS – SMALL



Possibility to order individual inserts

SPECIFICATIONS:

- dimensions: 14.5 x 7 cm

MATERIAL FREE OF CHARGE

SAMPLES – INTERIOR DOORS

SET OF INTERIOR DOOR CROSS-SECTION

Set of cross sections of products from the catalog of interior doors.

The set includes the following samples:

- LEDA EI30 fire-resistant doors
- FORTECA anti-burglary doors
- HERSE interior doors
- rebated panel doors – honeycomb core
- non-rebated panel doors – solid core
- rebated frame doors – VSG black glass
- rebated frame doors – VSG frosted glass
- skirting board
- decorative slats
- adjustable door frame
- fixed door frame
- HERSE fixed door frame

SPECIFICATIONS:

- dimensions: 50 x 21.5 x 21.5 cm
- weight: 7 kg



170.00 PLN NET

approx. **40.00 €** NET *)

SAMPLES – INTERIOR DOORS

GLASS TEMPLATE INTERIOR DOORS

The set includes 22 glass templates used in our doors.



SPECIFICATIONS:

- trunk dimensions: 37.5 x 17 x 22 cm
- form dimensions: 26 x 15.5 cm oraz 15.5 x 10 cm
- weight: 10 kg

500.00 PLN NET

approx **117.60** € NET *)

SAMPLES – WOODEN DOORS

COLOUR SAMPLES OF WOODEN DOORS

- wooden door color pattern book
- thick and sturdy in the form of a binder



SPECIFICATIONS:

- dimensions: folded: 22.5 cm x 31.5 cm
unfolded: 95.5 cm x 31.5 cm thickness:
5.5 cm

Product on request
- longer lead time

200.00 PLN NET

approx. **47.10 €** NET *)



SAMPLES – STEEL DOORS

CROSS-SECTION OF CORNERS WITH DOOR FRAMES – SET FOR STEEL DOORS

A set of four cross-sections of steel doors with aluminum frames, made in the available technologies for the production of steel doors.



Product on request
- longer lead time

SPECIFICATIONS:

one sample corner:

- base: 20 x 40 cm
- total height: 44 cm

1500.00 PLN NET

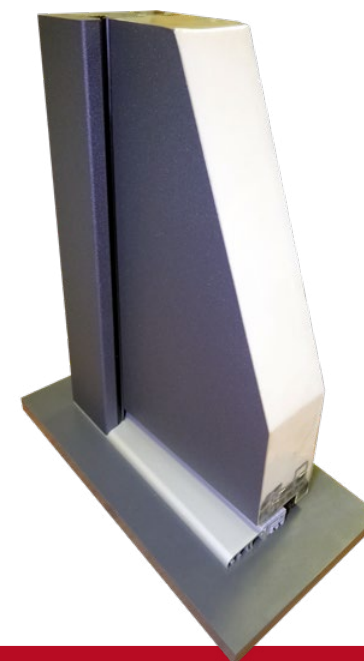
approx. **352.90 €** NET^{*)}

CROSS-SECTION OF CORNER WITH DOOR FRAME

Cross-section in the form of a corner door with a steel frame in the selected technology:

- THERMO 64
- THERMO 78
- THERMO HOT 78
- THERMO HOT 88

Product on request
- longer lead time



SPECIFICATIONS:

- base: 20 x 40 cm
- total height: 44 cm

Technology	Price
THERMO 64	400.00 PLN NET / approx. 94.10 € NET ^{*)}
THERMO 78	400.00 PLN NET / approx. 94.10 € NET ^{*)}
THERMO HOT 78	400.00 PLN NET / approx. 94.10 € NET ^{*)}
THERMO HOT 88	400.00 PLN NET / approx. 94.10 € NET ^{*)}

SAMPLES – STEEL DOORS

CROSS-SECTION OF STEEL DOOR FRAME

Cross-section of a steel door frame used in doors in THERMO 64 or THERMO 78.



SPECIFICATIONS:

- element length: 20 cm

30.00 PLN NET

approx. **7.10 €** NET*)

CROSS-SECTION OF ALUMINUM DOOR FRAME

It is possible to order a frame section in a set with a fanlight section (without a glazing package).



SPECIFICATIONS:

- element length: 20 cm

50.00 PLN NET

approx. **11.80 €** NET*)

PRICE PER PIECE



100.00 PLN NET

approx. **23.50 €** NET*)

SOLD AS A SET WITH SIDELIGHT AND TOPLIGHT CROSS-SECTION

SAMPLES – STEEL DOORS

CROSS-SECTION SAMPLES IN THE FORM OF A BOX



The set includes:

- 4 sections of doors with aluminum frames
- cross-section of THERMO 64 steel door frame
- cross-section of THERMO 64 steel corner frame
- 4 cross-sections of aluminum thresholds
- 4 sections of top and side lights frames

SPECIFICATIONS:

- dimensions: 44 x 30 x 5.5 cm

600.00 PLN NET

approx. **141.20 €** NET*)

SAMPLES – STEEL DOORS

TEMPLATE WITH TRANSPARENT SWITCHABLE GLASS (PDLC)

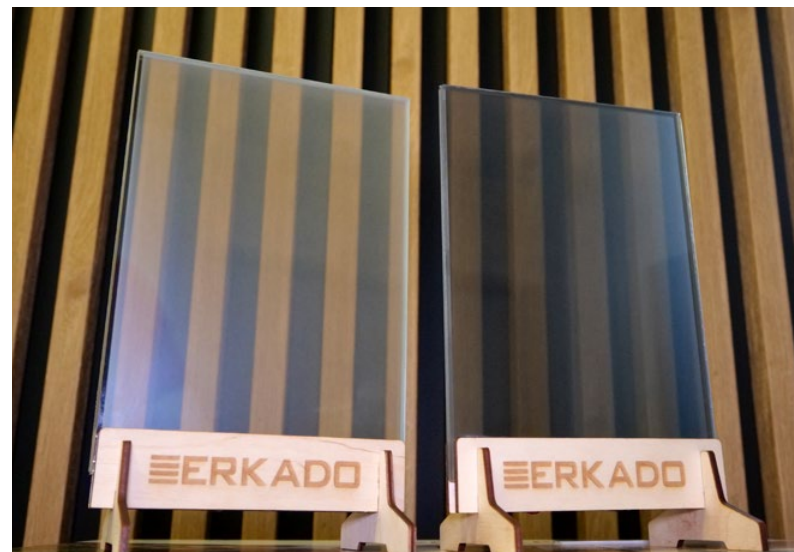
- choice of: frosted glass / graphite glass

SPECIFICATIONS:

- dimensions: 21 cm x 15 cm
- powered button, 2 pc. x AA batteries

200.00 PLN NET

approx. **47.10 €** NET^{*)}



SAMPLES – STEEL DOORS

CROSS-SECTION OF ALUMINUM THRESHOLD FOR STEEL DOORS

Cross-section of an aluminum threshold with different specifications, depending on the technology for which it is intended.



SPECIFICATIONS:

- length: 20 cm

50.00 PLN NET

approx. **11.80 €** NET^{*)}

SET OF GLAZING SAMPLES FOR STEEL DOORS



SPECIFICATIONS:

- dimensions of the box: 22 x 17 x 13 cm
- dimensions of samples: 11.5 x 12 cm

200.00 PLN NET

approx. **47.10 €** NET^{*)}

CROSS-SECTION OF THE GLASS UNIT FOR STEEL DOORS

Cross-section of a four-pane package with a warm black frame (Venetian mirror variant).



Product on request
– longer lead time

SPECIFICATIONS:

- dimensions: 20 x 20 cm

100.00 PLN NET

approx. **23.50 €** NET^{*)}

SHOWROOM ACCESSORIES

PLEXIGLASS POCKET

Plastic pocket designed for mounting on a display wall or on the surface of a door, used to place a 10 x 30 cm price label inside.

[Download file with labels for pockets](#)



SPECIFICATIONS:

- made of PVC
- finished with double-sided tape for mounting
- dimensions: 10 x 30 cm

3.00 PLN NET

approx. **0.70 €** NET^{*)}



LABEL WITH SPACER

A plastic pocket for presenting the model and price of a door on a designated display. The pocket should be fixed to the display wall. Designed for labels with a size of 10 x 30 cm. The pocket should be attached to the display wall. Designed for labels with dimensions of 10 x 30 cm.

[Download file with labels for pockets](#)



SPECIFICATIONS:

- PVC material
with dimensions of 10 x 35 cm on
spacers with a length of 2 cm
- mounting with screws screwed
into the base

30.00 PLN NET

approx. **7.10 €** NET^{*)}



SHOWROOM ACCESSORIES

MAGNETIC STICKERS

Set of four stickers with description of door technology to be placed on the door leaf.



SPECIFICATIONS:

- dimensions: 12 x 30 cm

50.00 PLN NET

approx. **11.80** € NET *)

PER SET

SHOWROOM ACCESSORIES

LOGO 3D white / black

Logo board, available in two color options: black or white.



SPECIFICATIONS:

- dimensions: 48 x 13 cm

40.00 PLN NET

approx. **9.40 €** NET *)

COMPANY PLATE

PVC laminated board with the ERKADO logo to be mounted with double-sided tape.



SPECIFICATIONS:

- dimensions: 35 x 10 cm

20.00 PLN NET

approx. **4.70 €** NET *)

SHOWROOM ACCESSORIES

BOARD WITH DOOR MODELS

PCV laminated board, matt surface

SPECIFICATIONS:

- dimensions: 70 x 120 cm

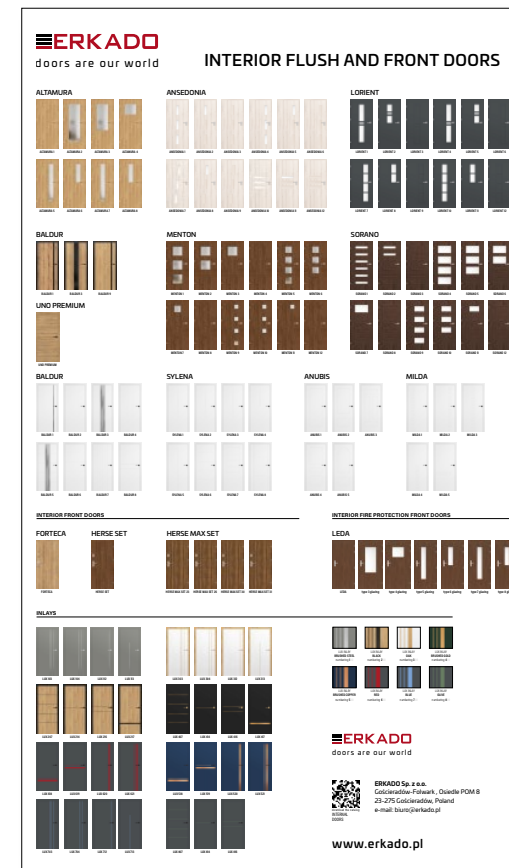
159.00 PLN NET

approx. **37,40 €** NET *)

STILE DOORS



FLUSH DOORS



SHOWROOM ACCESSORIES

BOARD WITH DOOR MODELS

PCV laminated board, matt surface

SPECIFICATIONS:

- dimensions: 70 x 120 cm

159.00 PLN NET

approx. **37,40 €** NET^{*)}

GRAF



STEEL DOORS



SHOWROOM ACCESSORIES

BOARD WITH DOOR FRAMES

PCV laminated board, matt surface

SPECIFICATIONS:

- dimensions: 70 x 120 cm

159.00 PLN NET

approx. **37,40 €** NET *)

INTERIOR DOOR FRAMES

ERKADO
doors are our world

DOOR FRAMES

ADJUSTABLE DOOR FRAME REBATED **ADJUSTABLE DOOR FRAME NON-REBATED**

ADJUSTABLE REBATED DOOR FRAME - adjustment range min-max (mm)											
65-80	80-90	90-100	100-110	110-120	120-130	130-140	140-150	150-160	160-170	170-180	180-190

ADJUSTABLE NON-REBATED DOOR FRAME - adjustment range min-max (mm)											
80-95	95-110	110-125	125-140	140-155	155-170	170-185	185-200	200-215	215-230	230-245	245-260

FIXED DOOR FRAME **QUARTER ROUND** **ARCHITRAVE** **DOOR FRAME JOINTS**

CLIP-ON SQUARE (6 cm and 8 cm) **STEEL DOOR FRAME ADJUSTABLE** **SQUARE steel door frame (large)**

SLIDING SYSTEMS SPIC POCKET SYSTEMS **SLIDING SYSTEMS SPIN WALL-MOUNTED**

COVERT CONCEALED DOOR SYSTEM GYPSUM BOARD INSTALLATION

ERKADO
doors are our world

ERKADO Sp. z o.o.
Colczarzędziej-Folwark, Osiedle PCM 8
23-275 Goleniów, Poland
e-mail: sklep@erkado.pl

Download the catalogue

www.erkado.pl

STEEL DOOR FRAMES

ERKADO
doors are our world

STEEL DOOR FRAMES

881 THERMO HOT 88 **781 THERMO HOT 78**

781 THERMO 78 **841 THERMO 64**

DOOR FRAME EXTENSIONS **ALUMINIUM ANGLE PROFILE**

TOP AND SIDE LIGHTS

www.erkado.pl

SHOWROOM ACCESSORIES

ERKADO ZONE CASSETTE

The box is made of a composite board of aluminum and plastic. The logo and letters are made of PVC.



SPECIFICATIONS:

- dimensions: 100 x 50 x 5 cm

864.00 PLN NET

approx. **203.30** € NET *)

SHOWROOM ACCESSORIES

SINGLE/DOUBLE EXPOSITORY STAND

Stand for presenting one or two door leaves. Made of 18 mm furniture board in white color, with ERKADO logo printed on it. Stable and mobile construction.

SPECIFICATIONS:

- single stand: 70 x 24 x 50 cm
- double stand: 70 x 24 x 60 cm
- door indentation width: 4 cm



160.00 PLN NET
approx. **37.60** € NET^{*)}



170.00 PLN NET
approx. **40.00** € NET^{*)}

SHOWROOM ACCESSORIES

HANDLE DISPLAY STAND

Very practical and solidly built door handle stand. Possibility of presenting 24 door handles on both sides of the wall (12 slots for handles visible from both sides).

SPECIFICATIONS:

- 12 slots for handles visible from both sides
- dimensions: base: 32 x 32 cm
height: 174 cm
wall thickness: 3.6 cm

600.00 PLN NET

approx. **141.20 €** NET *)



SHOWROOM ACCESSORIES

SINGLE/DOUBLE EXPOSITORY WALL

Wall covered with vinyl type wallpaper, on fleece. Lightweight and stable construction. Threshold made of white furniture board covered with PVC laminate (moisture resistant). Includes firm marking (ERKADO logo on PVC).

With plexiglas pocket for labels, which can be downloaded from: www.erkado.pl.

The product is designed for interior doors only. Wall in standard does not include logo plate possible to order on page 20.

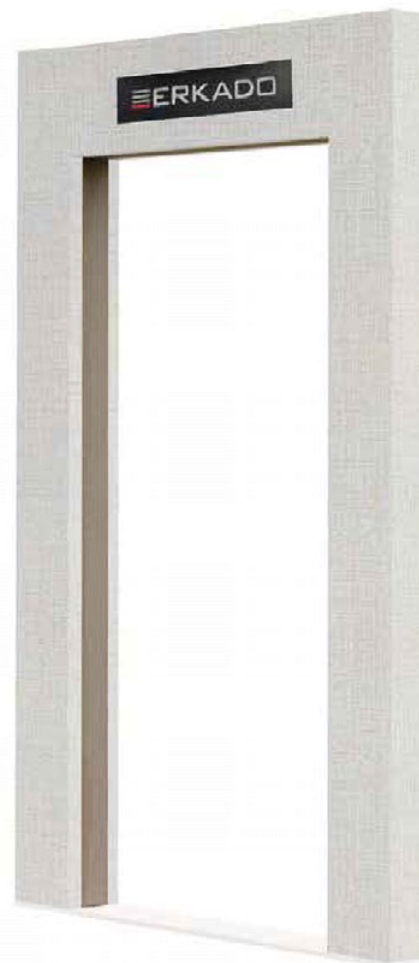
SPECIFICATIONS:

- single wall: 130 x 240 x 10 cm
- double wall: 130 x 240 x 20 cm
- opening: 90 x 208 cm
- ranges of ordered door frames:
 - non-rebated doors 95-115 cm,
 - rebated doors 100-120 cm

300.00 PLN NET

approx. **70.60 €** NET *)

SINGLE WALL



450.00 PLN NET

approx. **105.90 €** NET *)

DOUBLE WALL



SHOWROOM ACCESSORIES

REINFORCED EXPOSITORY SINGLE WALL FOR EXTERIOR DOORS

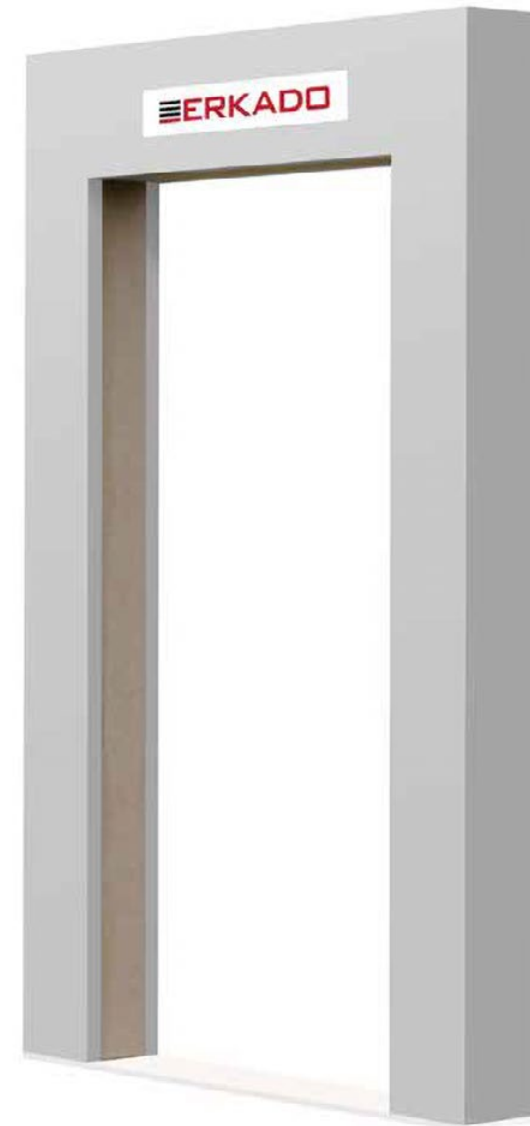
The wall is made of laminated board in gray color (similar to RAL 7047). Designed for installation of external steel and wooden doors of width "90".

SPECIFICATIONS:

- dimensions: 240 x 150 x 20 cm
- ranges of ordered door frames:
 - non-rebated doors 95-115 cm,
 - rebated doors 100-120 cm

800.00 PLN NET

approx. **188.20** € NET^{*)}



SHOWROOM ACCESSORIES

WINDMILL EXPOSITORY STAND

Display stand for presenting 8 pieces of rebated doors for 2 hinges (optionally for 3 hinges – please indicate in the order).

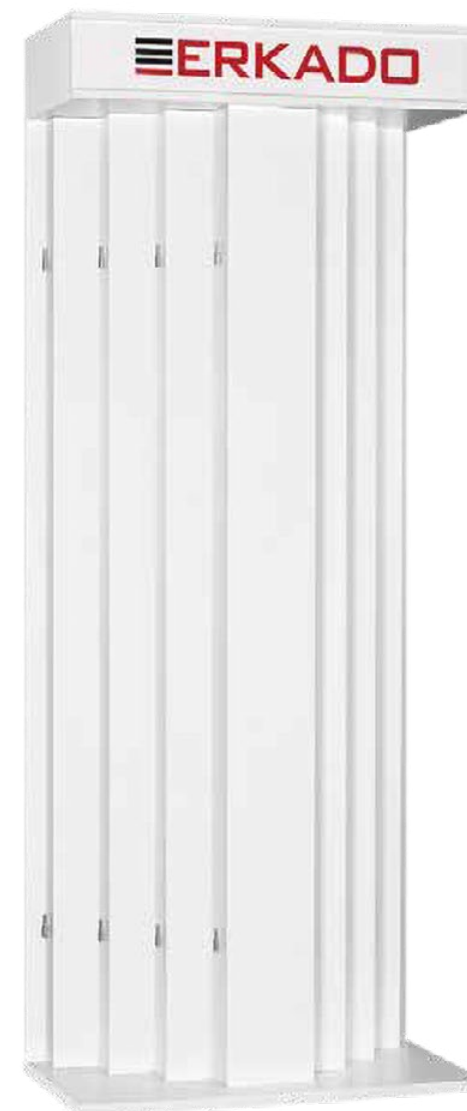
- solid and aesthetic finish
- saving exhibition space
- doors mounted on hinges

SPECIFICATIONS:

- height: 230 cm
- width with doors: 240 cm

1200.00 PLN NET

approx. **282.40 €** NET*)



SHOWROOM ACCESSORIES

CROSS EXPOSITORY STAND

Display stand for presenting 8 pieces of rebated doors. The structure is a combination of 4 double walls.

The product is delivered in elements for self-assembly.

W plexiglas pocket for labels, which can be downloaded from: www.erkado.pl. The standard wall does not include a logo plate possible to order on page 20.

SPECIFICATIONS:

- dimensions: 260 x 280 x 240 cm
- ranges of ordered door frames:
 - non-rebated doors 95-115 cm,
 - rebated doors 100-120 cm

1800.00 PLN NET

approx. **423.50** € NET^{*)}



SHOWROOM ACCESSORIES

CHIMNEY EXPOSITORY STAND – FOR 4 DOORS

Double wall covered with vinyl type wallpaper, on fleece. Lightweight and stable construction. Thresholds made of white furniture board covered with PVC laminates (moisture resistant). Includes company branding (ERKADO logo on PVC). Set includes a plexiglass pocket for labels, which can be downloaded from: www.erkado.pl.

Product designed for 4 pieces of doors.

Wall in standard does not include logo plate possible to order on page 20.

SPECIFICATIONS:

- double wall: 130 x 240 x 10 cm
- base: 130 x 150 x 4 cm
- interior door opening: 90 x 208 cm
- ranges of ordered door frames:
 - non-rebated doors 95-115 cm,
 - rebated doors 100-120 cm

1500.00 PLN NET

approx. **352.90** € NET*)



SHOWROOM ACCESSORIES

CHIMNEY EXPOSITORY STAND – FOR 2 DOORS

Double wall covered with vinyl type wallpaper, on fleece. Lightweight and stable construction. Base made of white furniture board. Includes firm marking (ERKADO logo on PVC). Set includes a plexiglass pocket for labels, which can be downloaded from: www.erkado.pl.

The standard wall does not include a logo plate possible to order on page 20.

Stand designed for mounting two pieces of doors type: HERSE, FORTECA, LEDA, OKTIS.

SPECIFICATIONS:

- double wall: 130 x 240 x 21 cm
- base: 130 x 100 x 4 cm
- interior door opening: 90 x 208 cm
- external door opening: 102 x 212 cm (reinforced)
- ranges of ordered door frames:
 - non-rebated doors 95-115 cm,
 - rebated doors 100-120 cm

1250.00 PLN NET

approx. **294.10 €** NET*)



SHOWROOM ACCESSORIES

SLIDING DISPLAY CABINET

Product made of MDF board painted with acrylic enamel in RAL 7047 color.

Closet suitable for presentation of 10 pcs. rebated or non-rebated door leaves.

The product uses LAGUNA firm slides.

SPECIFICATIONS:

- total height: 225 cm
- width of the base: 4 x 113 cm
- dimensions of the upper part (canopy): approx. 200 x 113 cm

4000.00 PLN NET

approx. **941.20** € NET^{*)}



OFFICE ACCESSORIES

PEN



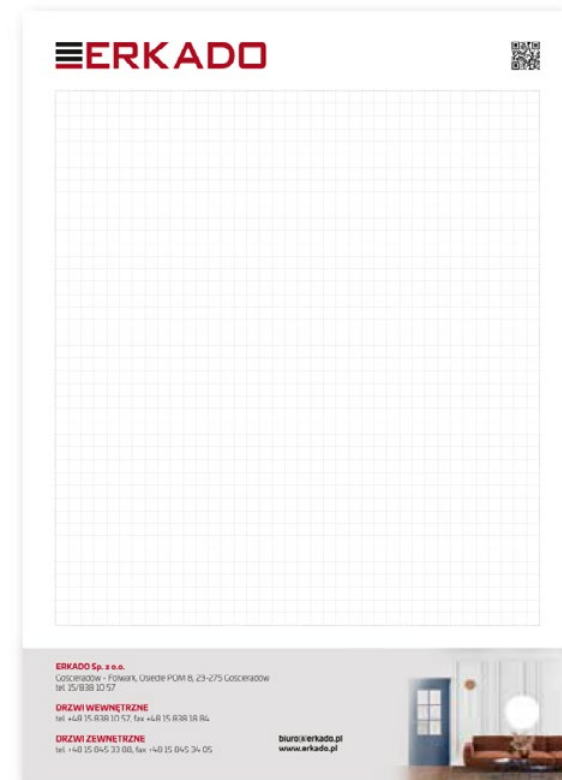
SPECIFICATIONS:

- pens packed in 50 pieces.
- color: black, white or red
- navy blue ink

2.00 PLN NET

approx. **0.50 €** NET^{*)}

NOTEPAD A4/A5



SPECIFICATIONS:

- A4 – 50 sheets
- A5 – 50 sheets

6.00 PLN NET

approx. **1.40 €** NET^{*)}

FORMAT: A4

3.00 PLN NET

approx. **0.70 €** NET^{*)}

FORMAT: A5

OFFICE ACCESSORIES

CLIPBOARD



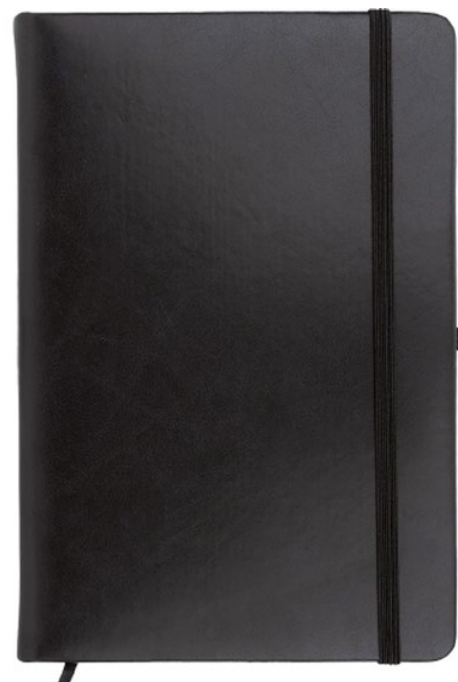
SPECIFICATIONS:

- A4 format

15.00 PLN NET

approx. **3.50 €** NET^{*)}

NOTEPAD A5



SPECIFICATIONS:

- A5 format

26.00 PLN NET

approx. **6,10 €** NET^{*)}

OFFICE ACCESSORIES

MUG



SPECIFICATIONS:

- white with printed logo
- height: 10 cm
- diameter: 8 cm

20.00 PLN NET

approx. **4.70 €** NET^{*)}

THERMAL MUG



SPECIFICATIONS:

- capacity: 440 ml
- colors to choose: brown, black, champagne

45.00 PLN NET

approx. **10.60 €** NET^{*)}

CLOTHING & EQUIPMENT

BASEBALL CAP



SPECIFICATIONS:

- size: one size
- weight: 180 g/m²
- 100% cotton

25.00 PLN NET

approx. **5.90 €** NET^{*)}

FLEECE SWEATSHIRT



SPECIFICATIONS:

- size: S, M, L, XL, XXL
- weight: 280 g/m², 420 g/m²
- 100% polyester

100.00 PLN NET

approx. **23.50 €** NET^{*)}

POLO SHIRT



SPECIFICATIONS:

- size: S, M, L, XL, XXL
- weight: 225 g/m²
- 100% cotton
- color: black

70.00 PLN NET

approx. **16.50 €** NET^{*)}

INTRODUCTION

BUM BAG



SPECIFICATIONS:

- size: one size
- weight: 180 g/m²
- 100% cotton

80.00 PLN NET

approx. **18,80 €** NET^{*)}

FLASHLIGHT RECHARGEABLE



SPECIFICATIONS:

- 400 mAh USB power bank
- size: Ø23, 10 cm
- material: aluminium

22.00 PLN NET

approx. **5,20 €** NET^{*)}

COTTON BAG



SPECIFICATIONS:

- dimensions: 41 x 38.5 cm

10.00 PLN NET

approx. **2.40 €** NET^{*)}

CLOTHING & EQUIPMENT

ETERNAL INKLESS PENCIL



SPECIFICATIONS:

- length: 15 cm
- available in black
- fitted with an eraser

10.00 PLN NET

approx. **2.40 €** NET^{*)}

BLACK PENCIL



SPECIFICATIONS:

- HB pencil
- fitted with an eraser
- available in black

2.00 PLN NET

approx. **0.50 €** NET^{*)}

MEASURING TAPE



SPECIFICATIONS:

- 5 meter long rolled measuring tape
- with metal plate with Erkado logo
- dimensions: 8.5 x 7 x 4 cm

66.00 PLN NET

approx. **15,50 €** NET^{*)}

ADVERTISING & OUTDOOR

BANNER



SPECIFICATIONS:

- dimensions: 250 x 100 cm
- various patterns to choose

160.00 PLN NET

approx. **37.60** € NET^{*)}

FLAG



SPECIFICATIONS:

- dimensions: 115 x 330 cm
- sleeve opening 7 cm wide

140.00 PLN NET

approx. **32.90** € NET^{*)}

WINDER (FLAG + MAST)



SPECIFICATIONS:

- dimensions: 60 x 310 cm

flag + mast:

208.00 PLN NET / approx. **48.90** € NET^{*)}

ground-driven base:

90.00 PLN NET / approx. **21.20** € NET^{*)}

rubber base 8.5 kg 40x40 cm:

180.00 PLN NET / approx. **42.40** € NET^{*)}

flat cross base 60x60 cm:

110.00 PLN NET / approx. **25.90** € NET^{*)}



doors are our world

ERKADO Sp. z o.o.
Gościeradów-Folwark Osiedle POM 8
23-275 Gościeradów
Poland
NIP 715-194-27-90

The prices in the catalogue are given in Polish zloty (PLN) in net, they will be converted into the currency of the contracting authority at the exchange rate of the day.

This catalog serves as a reference material and contains current prices and current availability of products. The manufacturer reserves the right to change prices and available goods without prior notice.

We reserve the right to printing errors.

The catalog does not constitute an offer within the meaning of the law and is published for informational purposes only.

Valid from 24.03.2026

*) The prices given in euro are approximate and the binding price for issuing an invoice is the price in PLN

www.erkado.pl