



INTERNAL DOORS - INSTALLATION INSTRUCTIONS SINGLE AND DOUBLE WALL SLIDING SYSTEM

Please read the warranty terms and conditions and the installation instructions before starting the installation.

ATTENTION: PRODUCT CONTAINS WOOD-BASED MATERIALS PROTECT AGAINST MOISTURE AND WETNESS!

REQUIRED MOUNTING ACCESSORIES:

screwdriver or screwdriver, 4 mm hexagonal spanner, drill, spirit level 2 m long, spacers, Ø7.5 mm screws 92 mm long, hammer, spacer blocks, wedges, low-compression assembly foam, neutral silicone (NOT sanitary), wood cutting tools

QUALITY AND ACCURACY OF WORKMANSHIP

- 1 The quality of workmanship is to be in accordance with the technical description of the product and the factory production control. Furthermore, the workmanship standard is to reflect the type of materials used and the production technology.
2. permissible gaps at connecting elements are 0.5 mm and concern at least: junctions of frame stands with lintel (upper beam), junction between transom and leaf vertical frame. A gap not exceeding 0.5 mm does not constitute a product defect.

PURPOSE

1. The product is designed for the installation of an opening in the wall of a room with a relative humidity not exceeding 50-60% and a temperature suitable for rooms intended for permanent human habitation, i.e. +20 degrees Celsius or higher.
2. installation is not permitted in rooms with permanently high humidity, e.g. laundry rooms, saunas, swimming pools, cellars, garages.
3. The choice of the appropriate door type should take into account the technical requirements of the building taking into account the applicable standards and regulations.

HEALTH AND SAFETY IN USE AND MAINTENANCE

1. Remove soiling with a damp cloth. Excessive amounts of water can cause irreversible wrinkling of the veneer.
2. The guarantor is not responsible for any side effects of the cleaning agents. Before using them, it is advisable to carry out a test on a small area, in an inconspicuous place, by applying the agent on a cloth.
3. Protect against moisture and wetness.
4. It is strictly prohibited to:
 - transport, handling and storage in a position other than upright, placing them on the lower edge of the
 - installation and storage in unventilated, damp or very sunny rooms,
 - cleaning and maintenance using chemical preparations containing corrosive substances, abrasive materials and substances that cause discolouration and damage,
 - the dispensing of cleaning agents directly onto the veneered or painted surface,
 - slamming, hanging heavy, wet, sticky objects, etc.
5. During installation, use and maintenance, the applicable occupational safety regulations must be strictly observed, in particular:
 - read and follow the instructions on the mounting foam label,
 - use efficient tools in accordance with their intended use during assembly,
 - use a handle, knob, hilt or other suitable hardware to open and close the door,
 - immediately rectify any functional faults that arise during use, in particular: loosening of fixing screws for accessories (catches,

locks, etc.), rubbing of the sash against the frame or the floor, stresses on the sash.

6. Any adjustments required due to deterioration of the functional features occurring during use must be carried out immediately by qualified fitters (out-of-warranty service with respect to the door manufacturer and the fitting company).
7. The product does not contain any dangerous substances as defined by Regulation (EC) No 1907/2006 of the European Parliament and of the Council of 18 December 2006.

BEFORE ASSEMBLY

1. Prepare the tools.
2. perform an initial visual inspection of the Product before removing the protective packaging and check compliance with the order.
3. remove the packaging without destroying the polystyrene foam, cardboard, bottom moulding and Manufacturer's labels, storing them until installation is complete.
4. the use of qualified installation teams is recommended.
5. Carry out the work in accordance with the rules of the trade and safety regulations.
6. commence installation after completion of other renovation and construction work (painting, wallpapering, tiling and panel laying) in rooms with a humidity level not exceeding 50%.

FITTING A BUFFER BEAM (BUMPER)

Assembly of the buffer beam is carried out after completion of the tunnel assembly and installation of the aluminium rail (guide rail) in the system with reveal assembly or after installation of the aluminium rail (in the system without reveal assembly). The complete buffer beam consists of a base beam and a cover strip with seal.

1. The bumper should be attached to:
 - wall (system without reveal),
 - angle bracket (system with reveal)
2. buffer components: base beam, cover strip, seal, catch (optionally with hook lock)
3. installation stages
 - a/ Remove masking strip from buffer beam, base beam in target position (against wall/ angle)
 - b/ drill 5 holes at regular intervals with a depth of minimum 8 cm, for fast assembly screws, use Ø8 drill bit,
 - c/ use Ø10 drill bits, approx. 3 mm deep, around the holes,
 - d/ place the screw in the hole of the beam, screw in until it is completely location,
 - e/ fit the gasket strip,
 - f/ check lock functionality (only for lock option hook).



FUNCTIONS AND INSTALLATION OF THE DOOR CLOSER

1. The door closer moves (tightens) the sash as it closes, slows down its movement and prevents it from hitting the buffer beam.

The attachment of the closer excludes the use of a synchroniser, ejector and stop on the buffer sides.

2. fixing the door closer:

- installation begins after the aluminium rail is in place and the door leaf handles have been fixed,
- unpack the kit and check for completeness and conformity behind the order, withdraw from the installation of the defective product or incomplete,
- fix the closer (in the closed position) between the sash brackets (illustrative drawings are included with the closer),
- insert the door leaf in the closed position,
- Slide the metal lock into the locking handle and then Screw the lock to the aluminium rail,
- check the functionality of the door and fix the fascia.

Attention: Fixing the door closer in the "60" sash requires the door handles to be moved towards the side edges. Make the screw holes yourself.

INSTALLATION WALL-MOUNTED SLIDING SYSTEM with reveal development

1. Install the tunnel according to separate installation instructions.
2. Fix the 2 spacer strips using dowels (fig. 1).
3. Install the holders (fig. 8) on the guide according to the instructions. placed in the guide
4. Fit the guide rail onto the spacers (fig. 3).
5. Screw the brackets to the leaf using 4x25 screws (fig. 7). Attach the door closer (optional)
6. Attach the roller system to the brackets.
7. fit the sash in the guide. The fixing screws serve at the same time to adjust the height of the sash and the distance of the sash from the tunnel.

8. install the stops in the track (fig.8), adjust their spacing to the position of the sash in open and closed state.

9. Adjust the position of the sash and screw on the floor guide (fig. 5).

10. Using screws, fit the bezel to the spacer strip (fig. 3).

INSTALLATION WALL-MOUNTED SLIDING SYSTEM without reveal development

1. Fix only one (wider) spacer bar with dowels (fig. 2).
2. Install the handles (fig. 8) on the guide according to the instructions on the guide.
3. Fit the guide rail onto the spacers (fig. 4).
4. Screw the handles to the leaf using 4x25 screws (fig. 7). Fix the door closer (optional)
5. Attach the roller system to the brackets.
6. fit the sash in the guide. The fixing screws serve at the same time to adjust the height of the sash and the distance of the sash from the tunnel.
7. install the stops in the track (fig.8), adjust their spacing to the position of the sash in the open and closed state.
8. Adjust the position of the sash and screw on the floor guide (fig. 5).
9. Using screws, fit the fascia to the spacers (fig. 3).

1 - SPACER STRIPS 2 PIECES

2 - BUMPER BAR

3 - DOOR FRAME

4 - SPACER BAR 1 PC

5 - GUIDING BAR

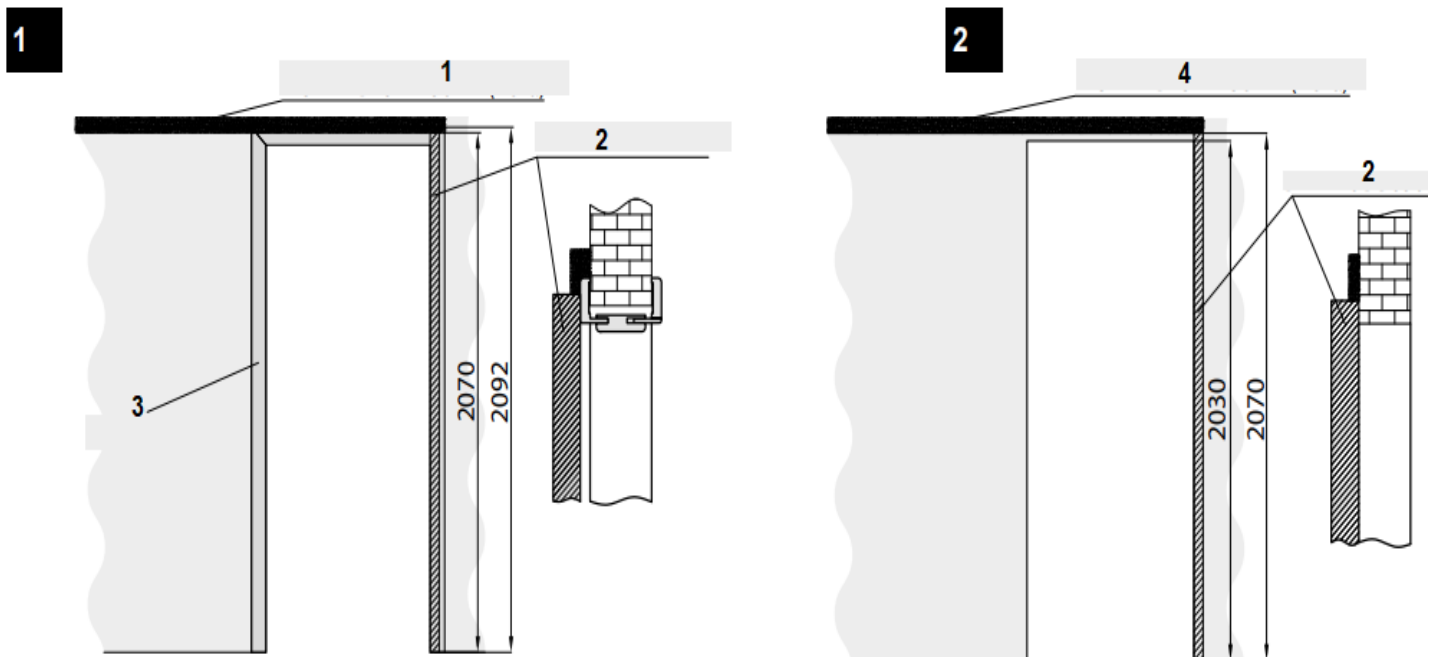
6 - COVER CAP

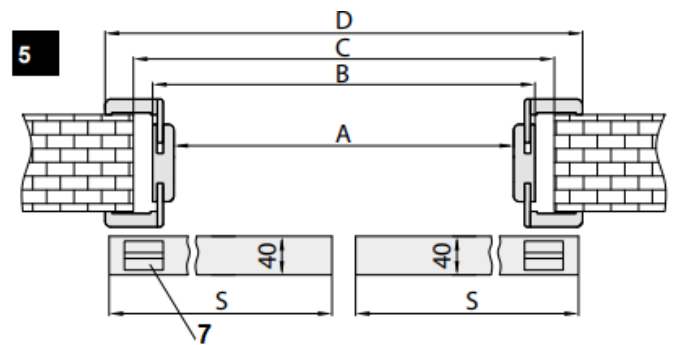
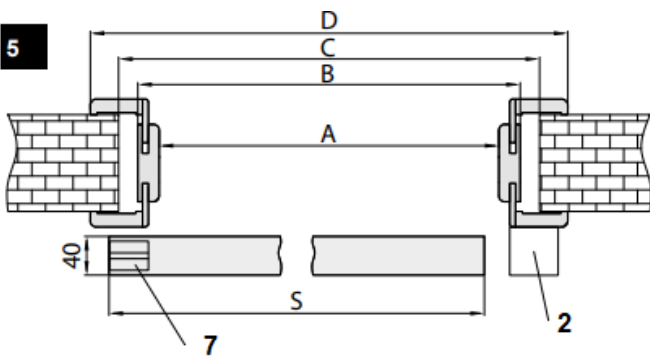
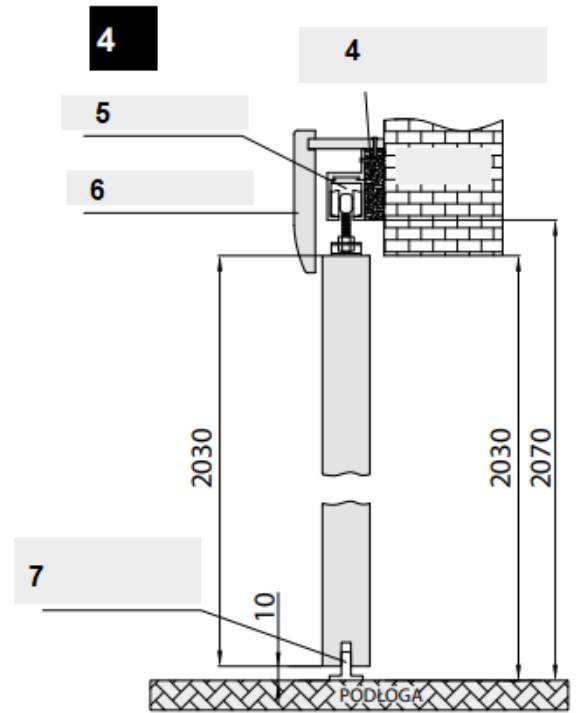
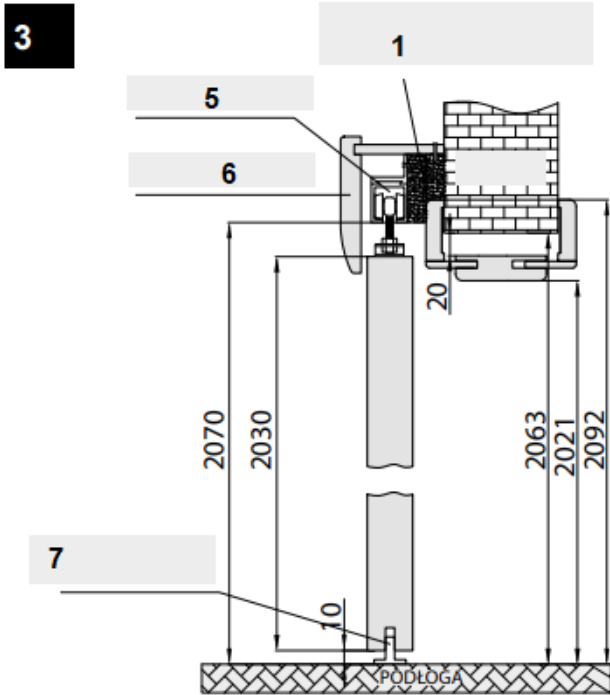
7 - FLOOR GUIDE

8 - STOP

9 - DOOR LEAF ADJUSTMENT SCREW

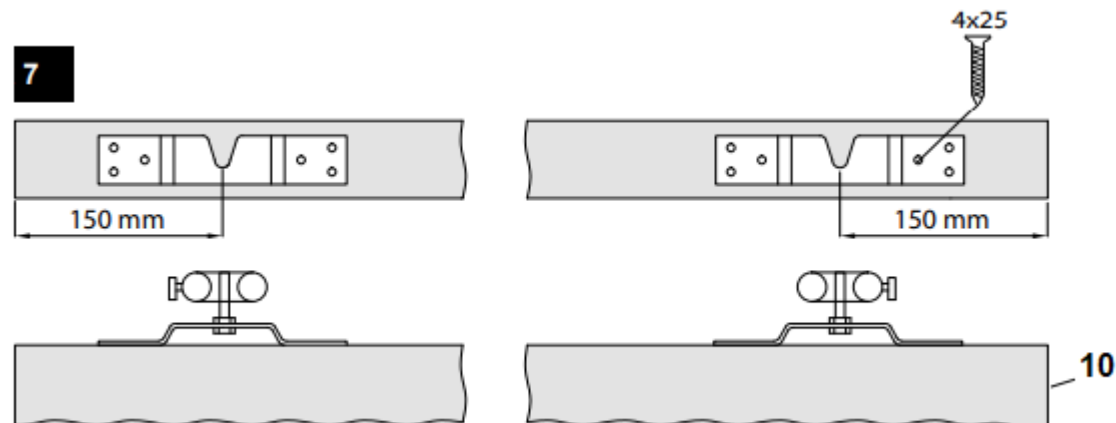
10 - DOOR LEAF





Symbol	„60”	„70”	„80”	„90”	„100”
A	602	702	802	902	1002
B	646	746	846	946	1046
C	686	786	886	986	1086
D	744	844	944	1044	1144
S	644	744	844	944	1044

Symbol	„60”x2	„70”x2	„80”x2	„90”x2	„100”x2
A	1202	1402	1602	1802	2002
B	1246	1446	1646	1846	2046
C	1286	1286	1686	1886	2086
D	1344	1544	1744	1944	2144
S	644	744	844	944	1044



ERKADO