



INSIDE DOORS - INSTALLATION INSTRUCTIONS

Please read the warranty terms and conditions and the installation instructions before starting the installation.

ATTENTION: PRODUCT CONTAINS WOOD-BASED MATERIALS PROTECT AGAINST MOISTURE AND WETNESS!

QUALITY AND ACCURACY OF WORKMANSHIP

1. The quality of workmanship is to be in accordance with the technical description of the product and the factory production control. Furthermore, the workmanship standard is to reflect the type of materials used and the production technology.
2. permissible gaps at connecting elements are 0.5 mm and concern at least: junctions between frame stands and lintel (upper beam), junction between transom and sash vertical frame. A gap not exceeding 0.5 mm does not constitute a product defect.

PURPOSE

1. The product is designed for the installation of an opening in the wall of a room with a relative humidity not exceeding 50-60% and a temperature suitable for rooms intended for permanent human habitation, i.e. +20 degrees Celsius or higher.
2. installation is not permitted in rooms with permanently high humidity, e.g. laundry rooms, saunas, swimming pools, cellars, garages.
3. The choice of the appropriate door type should take into account the technical requirements of the building taking into account the applicable standards and regulations.
4. The door leaf should be mounted on a door frame that provides the correct functional and performance characteristics.

HEALTH AND SAFETY IN USE AND MAINTENANCE

1. Remove soiling with a damp cloth. Excessive amounts of water can cause irreversible wrinkling of the veneer.
2. The guarantor is not responsible for any side effects of the cleaning products. Before using them, it is advisable to carry out a test on a small area, in an inconspicuous place, by applying the agent on a cloth.
3. Protect against moisture and wetness.
4. It is strictly prohibited to:
 - transport, handling and storage in a position other than upright, placing them on the lower edge of the
 - installation and storage in unventilated, damp or very sunny rooms,
 - cleaning and maintenance using chemical preparations containing corrosive substances, abrasive materials and substances that cause discolouration and damage,
 - the dispensing of cleaning agents directly onto the veneered or painted surface,
 - slamming, hanging heavy, wet, sticky objects, etc.
5. During installation, use and maintenance, the applicable occupational safety regulations must be strictly observed, in particular:
 - read and follow the instructions on the mounting foam label,
 - use efficient tools in accordance with their intended use during assembly,
 - use a handle, knob, hilt or other suitable hardware to open and close the door,
 - immediately rectify any functional faults that arise during use, in particular: loosening of screws fixing the accessories (hinges, catches, locks, etc.), rubbing of the sash against the frame or the floor, stresses on the sash.

6. Any adjustments required due to deterioration of the functional characteristics arising during use must be carried out immediately by qualified fitters (out-of-warranty service) in relation to the door manufacturer and the installation company).
7. The product does not contain any dangerous substances as defined by Regulation (EC) No 1907/2006 of the European Parliament and of the Council of 18 December 2006.

BEFORE ASSEMBLY

1. Prepare the tools.
2. perform an initial visual inspection of the Product before removing the protective packaging and check compliance with the order.
3. remove the packaging without destroying the polystyrene foam, cardboard, bottom moulding and Manufacturer's labels, storing them until installation is complete.
4. the use of qualified installation teams is recommended.
5. Carry out the work in accordance with the rules of the trade and safety regulations.
6. commence installation after other renovation and construction work (painting, wallpapering, tiling and panel laying) has been completed in rooms with a humidity level of no more than 50%.
7. Check all dimensions according to the diagram opposite.

REBATE DOOR LEAF ASSEMBLY

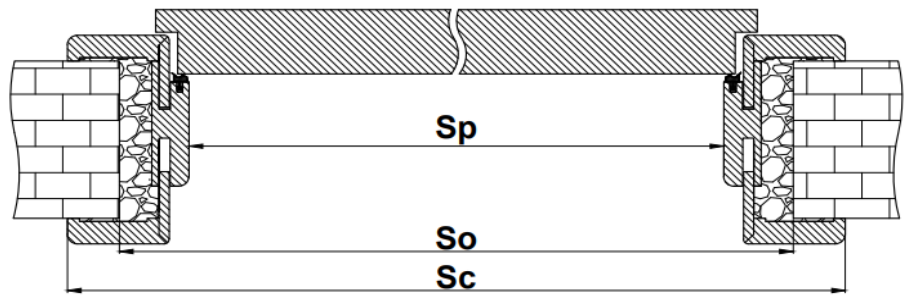
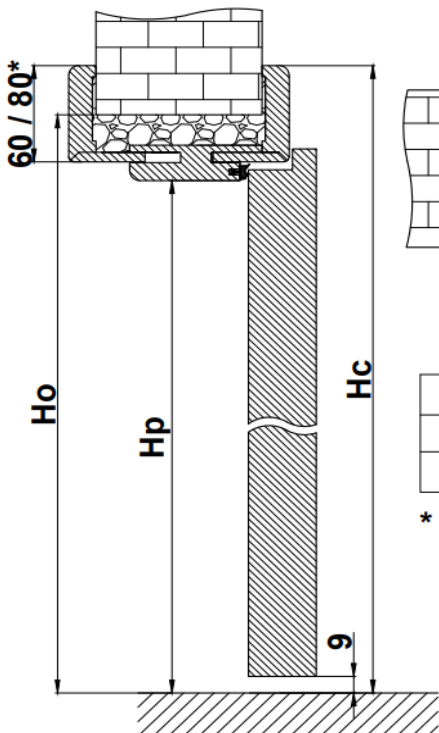
1. Unpack and fit the door leaf, checking for adherence to the frame.
2. remove the sash from the frame (applies to panelled sashes equipped with single pivot hinges), adjust the hinges and refit.
3. the panel leaf has factory screw-in 1-pin hinges. The frame leaf must be mounted on three 2-pin hinges.
4. Check the operation of the lock by closing the door 3 times.
5. adjust the hinges (applies to frame sashes equipped with double pivot hinges) without removing them from the frame.
6. Check operation of the lock(s) and fit accessories.

FITTING OF THE NON-REBATED DOOR LEAF

1. Unpack the wing.
2. embed the hinges in the sash and mark the point where the mounting screws will be fixed. Note: the selected markings are shown on the inside:
L - hinge for left hinge / R - hinge for right hinge
DOOR or DOORSIDE - hinge element fitted to the door /
FRAME - hinge element fitted to the frame.
3. Remove the hinge and drill the holes for the fixing screws at the marked location. Drill holes 30-40 mm deep using a $\varnothing 3$ mm drill bit.
4. Fix the hinges in the door leaf.
5. Fit the sash by screwing the hinge to the frame.
Check adhesion and gap size. Adjust hinges, check operation of lock(s) and fit accessories.



REBATED DOOR

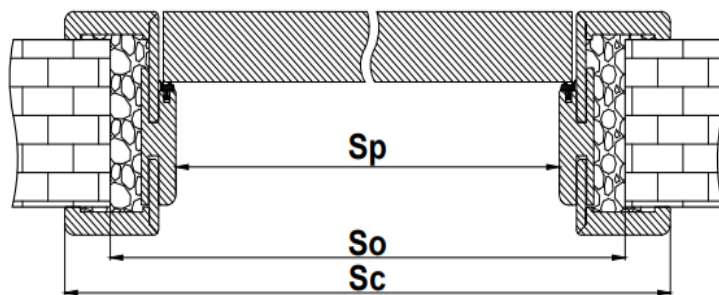
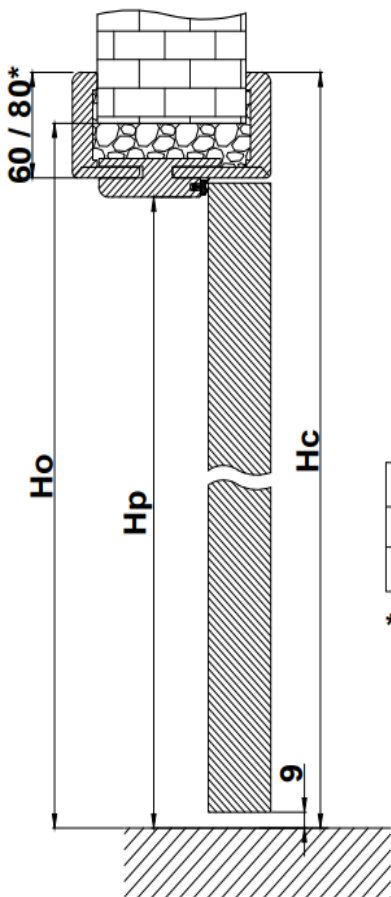


	"60"	"70"	"80"	"90"	"100"	"110"
Sc	746 / 786*	846 / 886*	946 / 986*	1046 / 1086*	1146 / 1186*	1246 / 1286*
So	688	788	888	988	1088	1188
Sp	604	704	804	904	1004	1104

* 80mm

	NORMA PL	NORMA 2112	NORMA CZ
Hc	2089 / 2109*	2171 / 2191*	2042 / 2062*
Ho	2060	2142	2013
Hp	2018	2100	1971

NON-REBATED DOOR

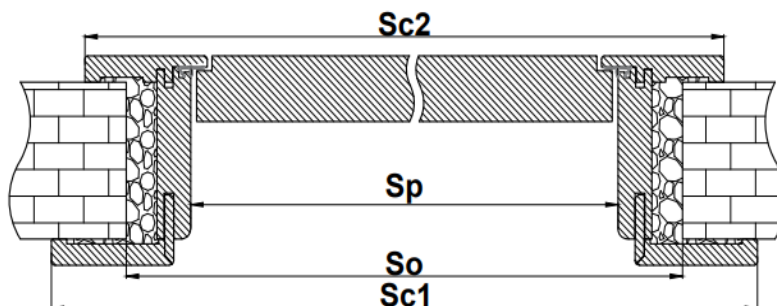
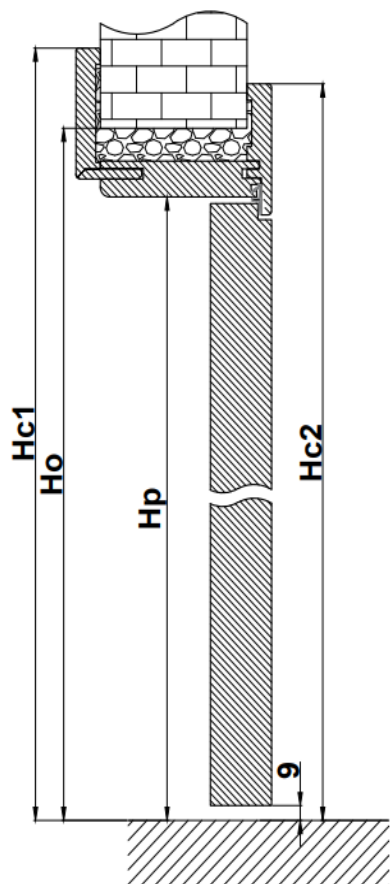


	"60"	"70"	"80N"	"80"	"90"	"100"	"110"
Sc	771 / 811*	871 / 911*	947 / 987*	971 / 1011*	1071 / 1111*	1171 / 1211*	1271 / 1311*
So	713	813	888	913	1013	1113	1213
Sp	629	729	805	829	929	1029	1129

* 80mm

	NORMA PL	NORMA 2112	NORMA CZ
Hc	2102 / 2122*	2184 / 2204*	2055 / 2075*
Ho	2073	2155	2026
Hp	2031	2113	1984

REVERSIBLE DOOR



	"60"	"70"	"80N"	"80"	"90"	"100"	"110"
Sc1	834	934	1010	1034	1134	1234	1334
Sc2	791	891	966	991	1091	1191	1291
So	736	836	900	936	1036	1136	1236
Sp	652	752	828	852	952	1052	1152

	NORMA PL	NORMA 2112	NORMA CZ
Hc1	2144	2226	2097
Hc2	2122	2204	2075
Ho	2095	2177	2048
Hp	2053	2135	2006